

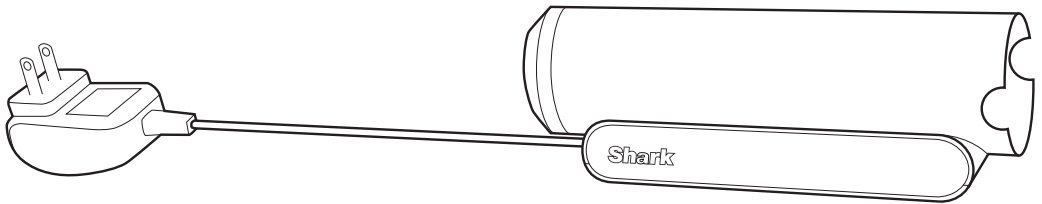
# ***Shark***.WANDVAC®

## **Battery Charging Sleeve**

WS630CCS

### **OWNER'S GUIDE**

---



For use with the WV400 Series

# IMPORTANT SAFETY INSTRUCTIONS

## FOR HOUSEHOLD USE ONLY

PLEASE READ ALL INSTRUCTIONS BEFORE USING THE BATTERY CHARGING SLEEVE.

If the charging cord plug does not fit fully into the outlet, reverse the plug. If it still does not fit, contact a qualified electrician. DO NOT force into outlet or try to modify to fit.

To reduce the risk of shock and unintended operation, turn off power and remove the battery before servicing.

## ⚠ WARNING

To reduce the risk of fire, electric shock, injury, or property damage:

1. The battery is the power source for the vacuum. Carefully read and follow all charging instructions.
2. Use only with Shark battery pack XSBT420.
3. Keep the battery away from all metal objects such as paper clips, coins, keys, nails, or screws. Shorting the battery terminals increases the risk of fire or burns.
4. Under abusive conditions, liquid may be ejected from the battery. Avoid contact with this liquid, as it may cause irritation or burns. If contact occurs, flush with water. If liquid contacts eyes, seek medical help.
5. Battery should not be stored at temperatures below 37.4°F (3°C) or above 104°F (40°C) to maintain long-term battery life.
6. **DO NOT** charge battery at temperatures below 40°F (5°C) or above 104°F (40°C).
7. Store the appliance indoors. **DO NOT** use or store it below 37.4°F (3°C). Ensure the appliance is at room temperature before operating.
8. **DO NOT** expose the battery to fire or temperatures above 265°F (130°C) as it may cause explosion.
9. Keep the appliance and its cord out of reach of children. **DO NOT** allow the appliance to be used by children. **DO NOT** allow to be used as a toy. Close supervision is necessary when used near children.
10. This appliance can be used by persons with reduced physical, sensory or mental capabilities or lack of experience or knowledge if they have been given supervision or instruction concerning use of the appliance in a safe way and understand the hazards involved. Cleaning and user maintenance shall not be done by children.

## BATTERY REMOVAL AND DISPOSAL

This product uses a lithium-ion rechargeable and recyclable battery. When the battery no longer holds a charge, it should be removed from the vacuum and recycled. **DO NOT** incinerate or compost the battery.

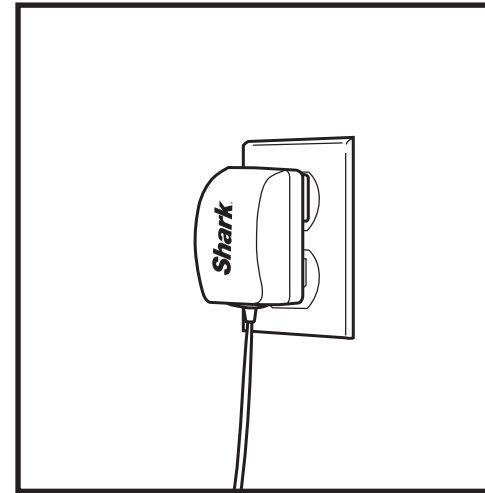
When your lithium-ion battery needs to be replaced, dispose of it or recycle it in accordance with local ordinances or regulations. In some areas, it is illegal to place spent lithium-ion batteries in the trash or in a municipal solid waste stream. Return spent battery to an authorized recycling center or to retailer for recycling. Contact your local recycling center for information on where to drop off the spent battery.

The RBRC™ (Rechargeable Battery Recycling Corporation) seal on the lithium-ion battery indicates that the costs to recycle the battery at the end of its useful life have already been paid by SharkNinja. In some areas, it is illegal to place spent lithium-ion batteries in the trash or in a municipal solid waste stream and the RBRC program provides an environmentally conscious alternative.

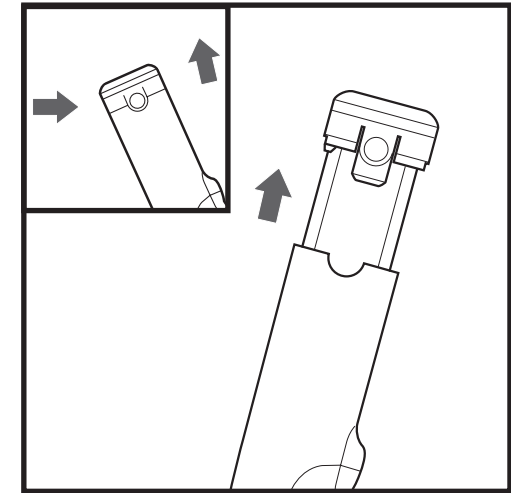
RBRC, in cooperation with SharkNinja and other battery users, has established programs in the United States and Canada to facilitate the collection of spent lithium-ion batteries. Help protect our environment and conserve natural resources by returning the spent lithium-ion battery to an authorized SharkNinja service center or to your local retailer for recycling. You may also contact your local recycling center for information on where to drop off the spent battery, or call 1-800-798-7398.

## SAVE THESE INSTRUCTIONS

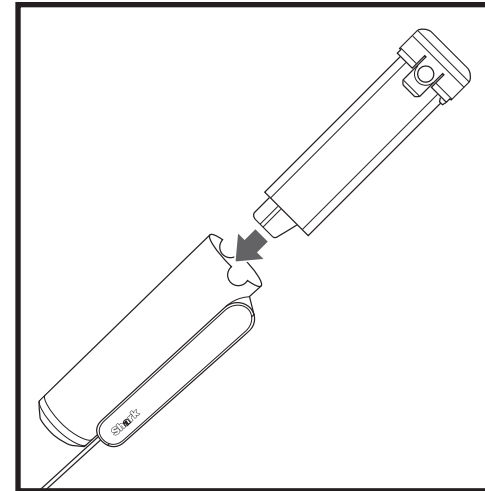
## USING THE CHARGING SLEEVE



To use the WANDVAC® Battery Charging Sleeve, first plug the adaptor into a wall outlet.



To remove the battery from the hand vacuum, press the release tabs on the battery cap and slide the battery out.



Slide the battery into the charging sleeve until it **clicks** into place. During charging, the indicator light will pulse white. When the battery reaches a full charge, the light will illuminate solid white, then shut off after five minutes.

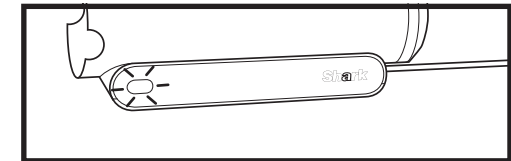
## TROUBLESHOOTING

**Indicator light on Battery Charging Sleeve is blinking white.**

- Overcurrent charge to unit.
- If additional battery is available, try charging it.
- If problem persists, contact Customer Service at 1-800-798-7398.

**Indicator light on Battery Charging Sleeve remains off.**

- Contact Customer Service at 1-800-798-7398.



## TECHNICAL SPECIFICATIONS

Voltage: 18V



**PLEASE READ CAREFULLY AND KEEP FOR FUTURE REFERENCE.**

This Owner's Guide is designed to help you get a complete understanding of your new Shark® WANDVAC® Battery Charging Sleeve.

SharkNinja Operating LLC  
US: Needham, MA 02494  
CAN: Ville St-Laurent, QC H4S 1A7  
1-800-798-7398  
sharkclean.com

Illustrations may differ from actual product. We are constantly striving to improve our products; therefore the specifications contained herein are subject to change without notice.

This product may be covered by one or more U.S. patents.  
See [sharkninja.com/patents](http://sharkninja.com/patents) for more information.

---

© 2021 SharkNinja Operating LLC. SHARK and WANDVAC are registered trademarks of SharkNinja Operating LLC.  
RBRC is a trademark of Rechargeable Battery Recycling Corporation.

WS630CCS\_IB\_BattSleeve\_MP\_Mv8  
PRINTED IN CHINA



@sharkcleaning