

Please be sure to read the enclosed Shark® Owner's Guide prior to using your unit.

# Shark®

# Rocket™

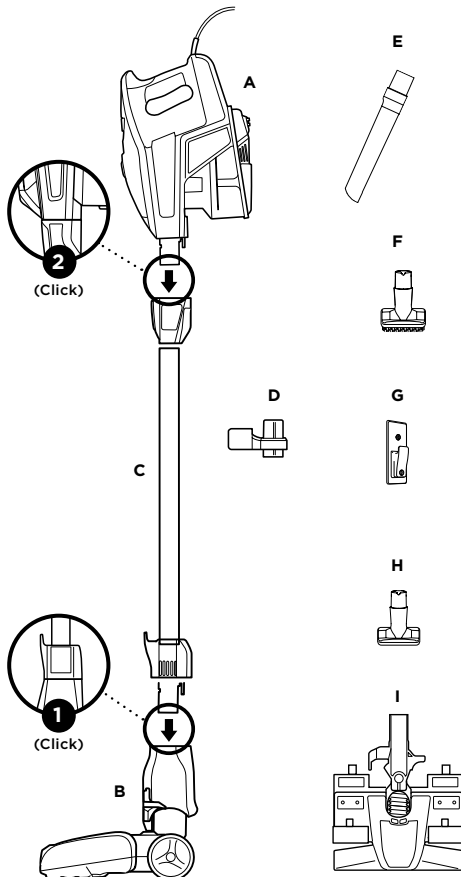
## DELUXE PRO ULTRA-LIGHT UPRIGHT

## QUICK START GUIDE

### WHAT'S INSIDE

- |                                   |   |
|-----------------------------------|---|
| <b>A</b> Handheld Vacuum          | <b>F</b> Dusting Brush                    |
| <b>B</b> Motorized Floor Nozzle   | <b>G</b> Wall Mount                       |
| <b>C</b> Wand                     | <b>H</b> Upholstery Tool                  |
| <b>D</b> Onboard Storage Clip     | <b>I</b> Dust-Away™ Hard Floor Attachment |
| <b>E</b> 30 cm (12") Crevice Tool |   |

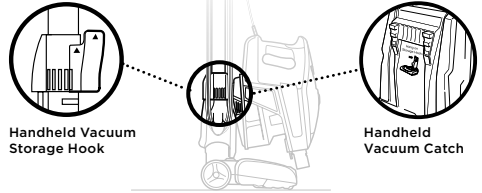
### ASSEMBLY



### STORAGE

#### Option 1: Onboard Hook

For compact, convenient storage, hang the handheld vacuum on the hook on the bottom of the wand, and wrap the power cord around the cord hooks. The unit stores easily in a closet or along a wall.



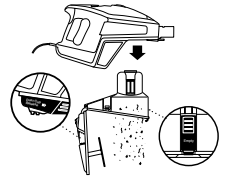
#### Option 2: Wall Mount

Please see included instruction sheet for wall mount installation information.

### MAINTENANCE

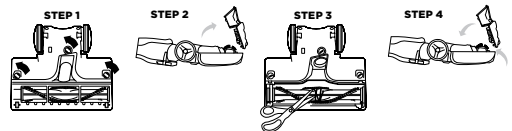
Empty the dust cup every time debris reaches the MAX fill line.

**TIP:** Wash filters every month to keep the suction strong.



#### Bottom of Floor Nozzle Maintenance

- 1 Use a coin to unlock the three locks on the bottom of the floor nozzle.
- 2 A portion of the base is removable to allow for better access to the brushroll and exposure to the airway. Shine a flashlight from the bottom to check for possible blockages in the airway.
- 3 Remove any string, carpet fibers, or hair that may be wrapped around the brushroll. There is a groove along the brushroll that allows a pair of scissors to cut across it to loosen up debris.
- 4 To reassemble, replace base by lining it up along the front of the nozzle. Push down to snap into place until you hear a click. Lock the three locks.

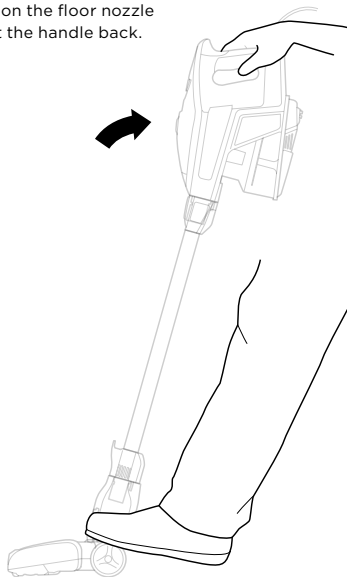


# VERSATILE FLOOR-TO-CEILING CLEANING

## FLOOR CLEANING

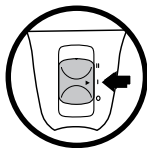
### 1 Plug In Vacuum

Then place your foot gently on the floor nozzle and tilt the handle back.



### 2 Choose Setting

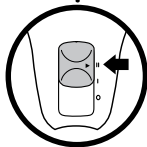
The Rocket® DeluxePro Ultra-Light has a 2-speed Power slider switch on the handle. Slide the Power switch to appropriate speed setting (I or II) and start cleaning.



#### Setting I

##### Bare Floor, Area Rugs

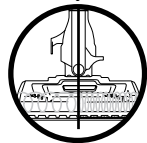
The brushroll spins slowly to clean bare floors and delicate area rugs.



#### Setting II

##### High Pile Carpets

The brushroll spins faster to pick up debris below the surface of your carpets.



**NOTE:** For deep cleaning per ASTM F 608 (embedded dirt in carpets) please set to High Pile Carpets (II).

## ABOVE-FLOOR CLEANING

- 1 Stand the vacuum upright. Step on the foot pedal and pull the wand up to disconnect it from the motorized floor nozzle.

OR

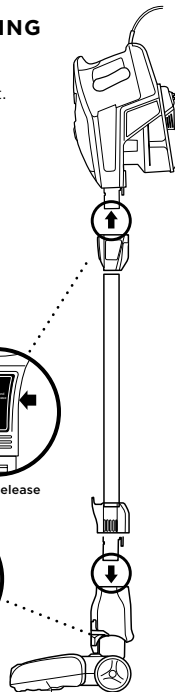
Press the Release button on the top of the wand to disconnect it from the handheld vacuum.



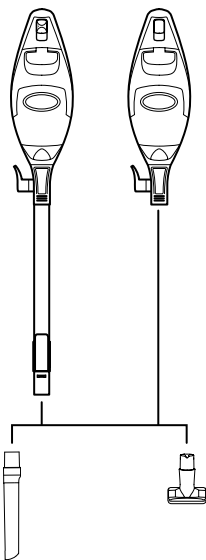
Wand Release



Floor Nozzle Release



- 2 Attach desired cleaning accessory.



**NOTE:** Use Setting I for all above-floor accessories.

For questions or to register your product, visit us online at [sharkclean.com](http://sharkclean.com)



@sharkcleaning

©2018 SHARK and ROCKET are registered trademarks of SharkNinja Operating LLC.  
DUST-AWAY is a trademark of SharkNinja Operating LLC.