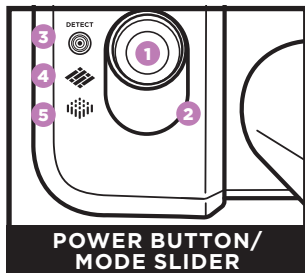


QUICK START GUIDE

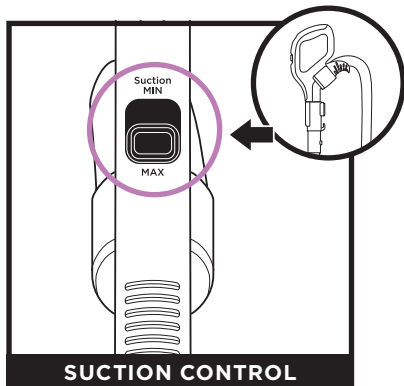
GET TO KNOW YOUR SETTINGS



POWER BUTTON/
MODE SLIDER

- 1 **POWER BUTTON:** Press to turn the vacuum on/off.
- 2 **MODE SLIDER:** Slide the button to select a surface mode.
- 3 **DETECT MODE:** Activates Floor Detect™ and Direction Detect technologies.
- 4 **HARD FLOOR MODE:** Select to optimize brushroll speed for cleaning hard floors like wood or tile.
- 5 **CARPET MODE:** Select to optimize brushroll speed for cleaning low and high pile carpets.

ADJUSTING SUCTION



SUCTION CONTROL

The **SUCTION CONTROL SLIDER** on the handle allows you to manually adjust the suction power.

WHEN TO ADJUST SUCTION

WOOD/TILE FLOORS



Select **MAX** suction for best cleaning and increased maneuverability on **hard floor surfaces**.

LOW PILE CARPETS



Select **MAX** suction for best cleaning and increased maneuverability on **low pile carpets**.

THICK CARPETS



Select **MIN** suction for best cleaning and increased maneuverability on **thick carpets**.

duo clean DETECT

FLOOR DETECT™



Senses floor type and automatically adjusts suction and brushroll speed.

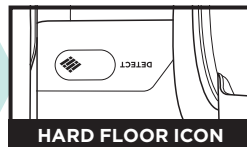
DIRECTION DETECT



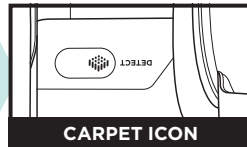
Senses cleaning direction and directs suction forward or reverse.

FLOOR DETECT INDICATORS

In **DETECT MODE**, the Carpet and Hard Floor icons on the nozzle will illuminate, based on the floor type detected.



HARD FLOOR ICON



CARPET ICON